




7040

Lycoming County Conservation District  
 542 County Farm Road, Suite 202  
 Montoursville, PA 17754



# 2012 ANNUAL REPORT

## Lycoming County Conservation District



**DISTRICT DIRECTORS**

- Carl Schlappi, Chairman
- Denise Tobin, Vice Chairman
- Larry Fry, Director
- William Messersmith, Director
- Joe Radley, Director
- Paul Wentzler, Director
- Ernie Larson, Commissioner/Director

**ASSOCIATE DIRECTORS**

- |                |                 |
|----------------|-----------------|
| Robert Voneida | Dorothea Lehman |
| Wendell Ball   | Michael Lehman  |
| Dave Blair     | Joseph Neyhart  |
| Julia Folmar   | Russ Reitz      |
| Paul Kremser   | Chalmer VanHorn |

Emma Voneida, Student Representative

**DISTRICT STAFF**

- Mark Davidson, District Manager
- Denise Moser, Secretary/ Treasurer
- Joe Agnoni, E&S Technician
- Chad Bower, Ag Conservation Technician
- Carey Entz-Rine, Watershed Specialist
- Rod Morehart, Chesapeake Bay Technician
- Curtis Swanger, District Technician
- Matt Johnson, Summer Intern

Lycoming County Conservation District  
 542 County Farm Road, Suite 202  
 Montoursville, PA 17754  
 Phone: (570) 433-3003  
 Fax: (570) 433-3907  
 Website: [www.lyco.org](http://www.lyco.org)

**PA Chesapeake Bay Program  
 2012 Clean Water Farm Award**



*Sherman Beef Cattle  
 Mike and Vanessa Sherman*

**Lycoming County Conservation District  
 52nd Annual Award Winners**



*The George Ulrich Family  
 2011 Cooperator of the Year*



*Jerry Walls  
 Special Recognition*

## NUTRIENT TRADING PROGRAM

Our trading program is a product of the Lycoming County Chesapeake Bay Tributary Strategy (CBTS), which originated in 2008 and brought together stakeholders from across the county. The goal was to provide flexibility to our wastewater treatment plants, preserve economic opportunities, and provide additional revenues to our local agricultural economy.

2012 was the 2nd year of active trading for the Lycoming County Nutrient Trading program and it proved to be a milestone year for the program. We successfully completed our first 2 credit trades with local treatment facilities., Hughesville-Wolf and West Branch Regional Authorities. 19 Lycoming County farmers were paid more than \$51,000, the proceeds from both the local trades and the PENN VEST Credit Trading auctions in



## CHEASAPEAKE BAY PROGRAM

In 2012, the Lycoming Conservation District agricultural staff completed a total of 112 on-farm educational visits to discuss current state and federal regulations with farmers .

The program also provided \$8,957.75 in cost share funding to develop nutrient management plans for nine Lycoming County operators covering 1,375.2 acres of crop and pasture land.

## NUTIRENT MNGMNT & ACT PROGRAM

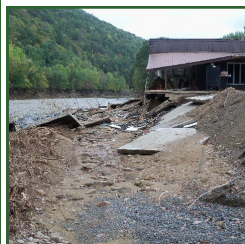
- 9 Act 38 NMPs were reviewed and approved (8 VAOs, 1 CAO)
- 2 CAO-CAFO NMP Amendments were reviewed and approved.
- 1 VAO-CAFO NMP Update accepted.
- 8 annual status reviews conducted to ensure plan compliance.
- 200 acres of new Ag E&S Plans completed.
- Hosted 2 MMP Workshops for 38 Attendees

## EMERGENCY WATERSHED PROTECTION

Lycoming County completed 14 stream bank stabilization projects on properties damaged by severe flooding by Tropical Storm Lee in September 2011.

The work included the installation of riprap, or stone reinforcing, along the properties to prevent further erosion.

The work was funded through a federal Emergency Watershed Protection Program grant and a state Department of Environmental Protection grant, which was used as the 25 percent local cash match needed for the county to receive the federal grant.



## DIRT AND GRAVEL ROADS

In 2012, the Dirt and Gravel Road Maintenance Program provided funding for three projects in Lycoming County totaling \$70,000.00. Approximately 2.2 miles of dirt and gravel roads were repaired by implementing Environmentally Sensitive Maintenance practices.



## WATERSHED MANAGEMENT

The nine Watershed Associations continue to work on stream restoration projects and education and outreach efforts throughout the county.

In 2012, Phase II of the Wallis Run Fish habitat enhancement Project was completed.



## AG LAND PRESERVATION

The Agricultural Land preservation program continues to be very popular within Lycoming County. In 2012, we purchased easements from 3 farms preserving over 300 additional acres in Lycoming County. The acreage of eased farms in Lycoming County currently stands at more than 8,150 acres. Although easements restrict future development on the property, owners retain the right to operate, manage, and sell the property at any time. The Lycoming County Agricultural Land preservation board will have approximately \$350,000 available for the purchase of conservation easements in 2013.

## EROSION AND SEDIMENT CONTROL

### Chapter 102 and 92 Delegation

- Reviewed 78 Erosion & Sediment (E&S) Control Plans
- Reviewed & approved 39 General National Pollution Discharge Elimination System (NPDES) permits.
- Reviewed 9 Individual NPDES permits.
- Reviewed & approved 1 Erosion and Sediment Control Permit.
- Performed 62 earth disturbance inspections and 42 complaints
- Held 1 training for E&S plan preparers which 46 participants attend.

## EDUCATION AND OUTREACH

### Lycoming / Sullivan Envirothon

In 2012, 105 students participated in the Annual Envirothon. Loyalsock High School represented Lycoming County at the Pa Envirothon.

### Class and Field Programs

LCCD provides numerous programs and fieldtrips to schools, camps, and watershed associations. Programs include water quality, watersheds, wetlands, and tree identification.

### Lycoming County Conservation Learning Trail

In 2012, LCCD completed the Conservation District Learning trail at the Lycoming County Farm. The trail is a 1.1mi loop that includes an overview of the farming practices, CREP Buffer in the wetland, a deer enclosure fencing from a recent timber improvement cut and an overlook of Loyalsock Creek.

