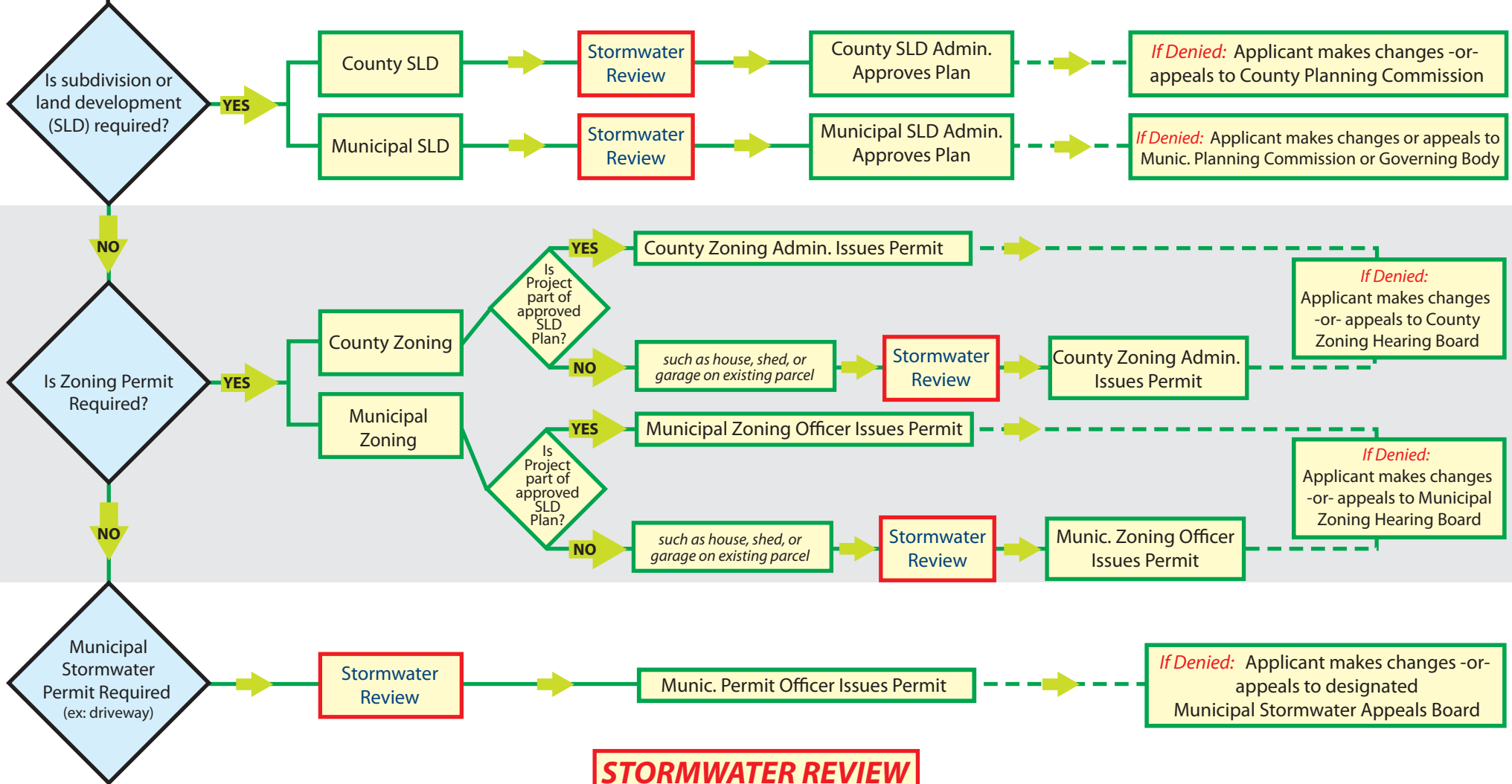


# STORMWATER PERMIT APPROVAL FLOW CHART

Pre-Application Meeting encouraged between Applicant, Municipal Permit Officer, and Zoning Administrator

Application is submitted to Municipal Permit Officer, consultant, Zoning Officer/ Administrator



## STORMWATER REVIEW

- \* Exempt:** Less than 1000 square feet impervious and less than 5000 square feet disturbed area
- \*\* May be Exempt:** 1,000 to 5,000 square feet impervious and 5,000 to 20,000 square feet disturbed area if disconnected from impervious area
- \*\* Minor Stormwater Plan:** 1,000 to 5,000 square feet impervious and 5,000 to 20,000 square feet disturbed area if connected to impervious areas
- \*\*\* Stormwater Plan:** 5,000 square feet or more impervious area or more than 20,000 square feet disturbed area

- \* No plan required, permit approved and on file
- \*\* Referral as needed to engineer or qualified professional
- \*\*\* Must be approved by engineer or qualified professional