

# SINGLE STREAM RECYCLING

**THANK YOU  
FOR  
RECYCLING  
THESE  
LISTED ITEMS**

**ANY ITEM  
NOT LISTED  
IS NOT  
ACCEPTED!**



## **Plastic Containers**

**Plastics # 1-7:  
Kitchen, Laundry, Bath  
Bottles & Containers**  
*(No Styrofoam)*



## **Cans**

**Steel Cans,  
Aluminum Cans  
& Foil**



## **Paper**

**Mixed Paper, Newspaper,  
Junk Mail, Magazines,  
Composite Cans &  
Flattened Cardboard**



## **Glass**

**Glass Bottles & Jars**  
*(No Glass Cups, Pyrex,  
Ceramics, or Window Glass)*

Questionable Items?  
Throw Away -OR-  
Contact the  
LCRMS Recycling Hotline  
(800) 736-7559  
[www.lcrms.com](http://www.lcrms.com)



**NO!**



**Do Not Bag Recyclables  
No Garbage**



**No Plastic  
Bags or Plastic Wrap**



**No Food or Liquid  
(Empty all containers)**



**No Tangles  
(No hoses, wires,  
chains, or electronics)**



**No Clothing  
or Linens**



# CURBSIDE RECYCLING COLLECTION INCLUDE THE FOLLOWING:



Steel Cans



Aluminum  
Cans



CLEAR  
Glass Bottles  
& Jars



BROWN  
Glass Bottles  
& Jars



GREEN/BLUE  
Glass Bottles  
& Jars

## **CURBSIDE RECYCLING:**

1. Recycling must be separated by type, as listed above
2. Recycling must be in an open-top container
3. Recycling must be out at the curb **NO later than 7:00 am** day of recycling pick-up
4. Glass recycling - please only recycle glass bottles & jars. **NO Pyrex, window glass, or ceramics!**

## **Monthly Curbside Collection is Available to Residents Located in the Following Mandated Communities:**

1. City of Williamsport
2. Borough of South Williamsport
3. Loyalsock Township

*\*If you live in this service area - please contact our office or visit [www.lcrms.com](http://www.lcrms.com) to be added to a monthly collection route.*

***\*\*If you live outside of this service area and/or prefer curbside single stream recycling (commingling of acceptable recyclables), please visit our site for participating waste haulers, or contact your current waste hauler for details.***

*Other Recyclable Items? Use local drop off sites -OR- upgrade to curbside single stream recycling (through Waste Hauler Subscription)*

*Questions? Contact the LCRMS Recycling Hotline for guidance: (800) 736-7559 or visit [www.lcrms.com](http://www.lcrms.com).*



# LYCOMING COUNTY RESOURCE MANAGEMENT

**COMMISSIONERS:**  
Scott L. Metzger - Chairman  
Tony Mussare - Vice Chairman  
Rick Mirabito - Secretary

## July 2023 Curbside Collection Schedule

**PLASTIC BAGS ARE NOT ACCEPTED**

**Williamsport A (West of Lycoming Creek Road)**

**WEDNESDAY, JULY 5<sup>TH</sup>**

**Williamsport B (East of Lycoming Creek Rd. to Market St.)**

**WEDNESDAY, JULY 12<sup>TH</sup>**

**Williamsport C (East of Market Street)**

**WEDNESDAY, JULY 5<sup>TH</sup>**

**South Williamsport**

**WEDNESDAY, JULY 5<sup>TH</sup>**

**Loyalsock Section #1 (South of Four Mile Drive)**

**WEDNESDAY, JULY 19<sup>ST</sup>**

**Loyalsock Section #2 (North of Four Mile Drive)**

**WEDNESDAY, JULY 26<sup>TH</sup>**

### TIP OF THE MONTH:

“Do not throw batteries into any recycling or trash bin, they should be taken to a battery collection point like Staples.

Rechargeable batteries, like ones from power tools, can be taken to Lowes for recycling.

Batteries are becoming the biggest risk to fires in recycling facilities, landfills, and in the trucks transporting recycling and waste.

Please dispose of batteries properly.”

RECYCLING HOTLINE - 1-800-736-7559 • VISIT US ONLINE AT [WWW.LCRMS.COM](http://WWW.LCRMS.COM)



# ACCEPTABLE RECYCLABLES AT LYCOMING COUNTY DROP OFFS



**Plastic's #1 & 2:**  
Kitchen, Laundry,  
Bath Bottles  
& Containers



**Steel Cans\* & Aluminum Cans\***  
*\*Combined with Plastics*



**Glass Bottles & Jars**  
(Clear, Brown, Green, Blue)



**Mixed Paper, Newspaper, Junk Mail, Office Paper, Magazines, & Flattened Cardboard**



No Plastic Bags or Plastic Wrap



Do Not Bag Recyclables  
No Garbage



No Food or Liquid  
(empty all containers)



No Clothing or Linens



No Tangles (no hoses, wires, chains, or electronics)

## **More Examples of UNWANTED Items:**

1. NO Heavy Plastic items - Laundry baskets, kitty litter buckets, kids toys, pools, etc.
2. NO TVs, vacuums and any other unwanted household appliances
3. NO to any glass that is not a bottle or jar (Pyrex, Window glass, and ceramics are not acceptable)
4. NO Trash - any household trash is not acceptable!
5. NO Batteries are a fire hazard. Battery recycling can be found at separate locations
6. NO PLASTIC BAGS, take back to grocery stores
7. NO Styrofoam & any packing material, take it out of the box and throw away.

Questionable Items? Throw Away -OR- Contact the LCRMS Recycling Hotline for guidance: (800) 736-7559 or visit [www.lcrms.com](http://www.lcrms.com).



# Electronic Recycling



Accepted **only** at Lycoming County Resource Management Services

447 Alexander Drive, Montgomery, PA 17752

Hours: Monday-Friday 7:00am – 4:30pm

Saturday 7:00am – 12:00pm

Accepted from residents and small businesses of 50 or less employees (businesses, please call first)  
For more information: [www.lcrms.com](http://www.lcrms.com) or call the Recycling Hot Line: (800) 736-7559

## ACCEPTABLE ELECTRONICS

1. **Monitors, Televisions:**
  - a. (CRT's, LCD's, LED's, Plasma, Projection and Flat screens)
2. **Computers:**
  - a. Desktop, Laptop  
Notebooks, Servers and  
Tablets (PC's)
3. **Computer Peripherals:**
  - a. Keyboards, Mice, Computer  
Speakers and all external  
devices  
(i.e. scanners and Hard Disc  
Drives.)
4. **Printers:** All Desktop Printers,  
Inkjet, All in ones and Lasers.

## UNACCEPTABLE ELECTRONICS

### Place in LCRMS scrap metal bin:

1. Toaster ovens
2. Microwaves

### Place with household garbage:

1. Blenders
2. Dishwashers
3. Lamps
4. Land-line Phones
5. Radios
6. Toasters
7. Electric griddles
8. Vacuum cleaners
9. Switches
10. Modem & External Tape
11. Stereo Equipment
12. Any other electronics

### Electronics accepted at Staples (Loyal Plaza)

Call for more information – (570) 323-3822.

1. Cameras/Camcorders/Webcams
2. Gaming Consoles
3. UPS/Battery Backup
4. VCR/DVD/Blu-Ray Players
5. CD Players
6. CD/Blu-Ray ROM
7. Wireless Routers
8. Modems
9. Stereo Equipment
10. Other acceptable items can be found  
at [www.staples.com/recycling](http://www.staples.com/recycling)





LANDFILL·ENERGY·RECYCLE

## CLEAN WOOD RECYCLING



### ACCEPTABLE CLEAN WOOD:

- Unpainted wood
- Stained wood
- Wood with glue
- Brush
- Limbs not exceeding 10" in diameter
- Pallets
- Skids
- Compressed wood fiber pallets
- Utility spools with hardware removed
- Plywood
- Waferboard



### UNACCEPTABLE IN CLEAN WOOD\*:

- Non-wood items
- Pressure-Treated wood
- Plasterboard
- Creosote products
- Demolition waste
- Masonite
- Painted wood
- Waste/Styrofoam
- Plastic wrap or plastic banding
- Utility spools with hardware

\*Unacceptable wood will be landfilled and charged accordingly

## WHY IS CLEAN WOOD QUALITY IMPORTANT AT LCRMS?

Recycled clean wood is used in the environment. Please help keep it clean for its reuse. Thank you for your recycling participation!





















312704

**PENSKE**  
Truck Rental

**PENSKE**  
Truck Rental

Household & Business Rentals

GoPenske.com  
1-800-GO-PENSKE

Special Savings for Members

Your Next Car  
Penske Cars.com

T39 322













**HAND UP**  
Handing Up  
2700 Highway 16, Suite 10  
www.handupusa.com  
Call for delivery and more - 800-742-2000

**PENSKE**

L069819  
FL



# UNION COUNTY

## 2023 Summer Recycling Event



101 Hafer Rd, Lewisburg, PA 17837  
The Old Country Cupboard Parking Lot  
Friday, July 7, 2023: 3:00 p.m. – 6:00 p.m.  
Saturday, July 8, 2023: 9:00 a.m. – 3:00 p.m.



### WE ARE RECYCLING:

 Electronics  Computers   
Clothing  Textiles  TVs

**We will not accept:** Household Batteries, Light Bulbs, CDs, DVDs, VHS Tapes, Styrofoam, or Appliances.

**UNION COUNTY RESIDENTS ONLY! Must show proper identification**  
*This is a FREE event for Union County Residents.*

**Special thanks to the Evangelical Community Hospital!**

Need more info? Call the Recycling Hotline at 570-524-9300

**This event will be held rain or shine!**

**PLEASE STAY IN YOUR VEHICLE AT ALL TIMES**

Turn  
Over 



**BOOKS, CLOTHING  
and TEXTILES**

- Backpacks
- Clothing  
-will be reused, if possible
- Books
- Belts
- Blankets
- Curtains
- Hats
- Jeans
- Linens
- Purses
- Shoes
- Sheets
- Towels
- Textiles and Fabrics
- Yarn



**NO PILLOWS OR MATTRESSES  
NO CARPET OR RUGS**

**COMPUTERS and ELECTRONICS**

- Adding Machines
- Answering Machines
- Audio and Visual Equipment
- Bar Coding Equipment
- Blackberries
- Cable TV Boxes
- Calculators
- Camcorders
- Cameras
- CD Rom Drives
- Cell Phones and Accessories
- Circuit Boards
- Communication Systems
- Connectors / Cords / Wires
- Copiers
- Cordless Phones
- Drones
- Duplicators
- DVD Players
- Electronic Games
- Fax Machines
- Floppy Drives
- Game Boys
- Hard Drives
- Hoverboards
- Laptops
- Mainframe Computers and Servers
- Memory Chips
- Microscopes
- Microwaves & Toaster Ovens
- Modems
- Motherboards
- Network / Video / Sound Cards
- Nintendo Switch
- Oscilloscopes
- Pagers
- PDAs
- Personal Computers (All Components)
- Play Stations
- Plotters
- Printers
- Radios
- Remote Controls
- Scanners Compact Disc Players Stereos  
- NO LARGE SPEAKERS
- Scrap Computer Metals and Plastics
- Tablets
- Tape Players
- Telephones and Telephone Equipment
- Telescopes
- Televisions
- Testing Equipment
- Tivos
- Transparency Makers
- Two-Way Radios
- Typewriters and Word Processors
- UPSs
- VCRs
- Video Cameras
- VR Headsets
- X-Boxes
- Other Consumer Electronics

**REDUCE, REUSE, RECYCLE!**

**Need more info?**

Call the Recycling Hotline  
at 570-524-9300



**Will be held RAIN or SHINE!**

**UNION COUNTY RESIDENTS ONLY!**

**Must show proper identification**



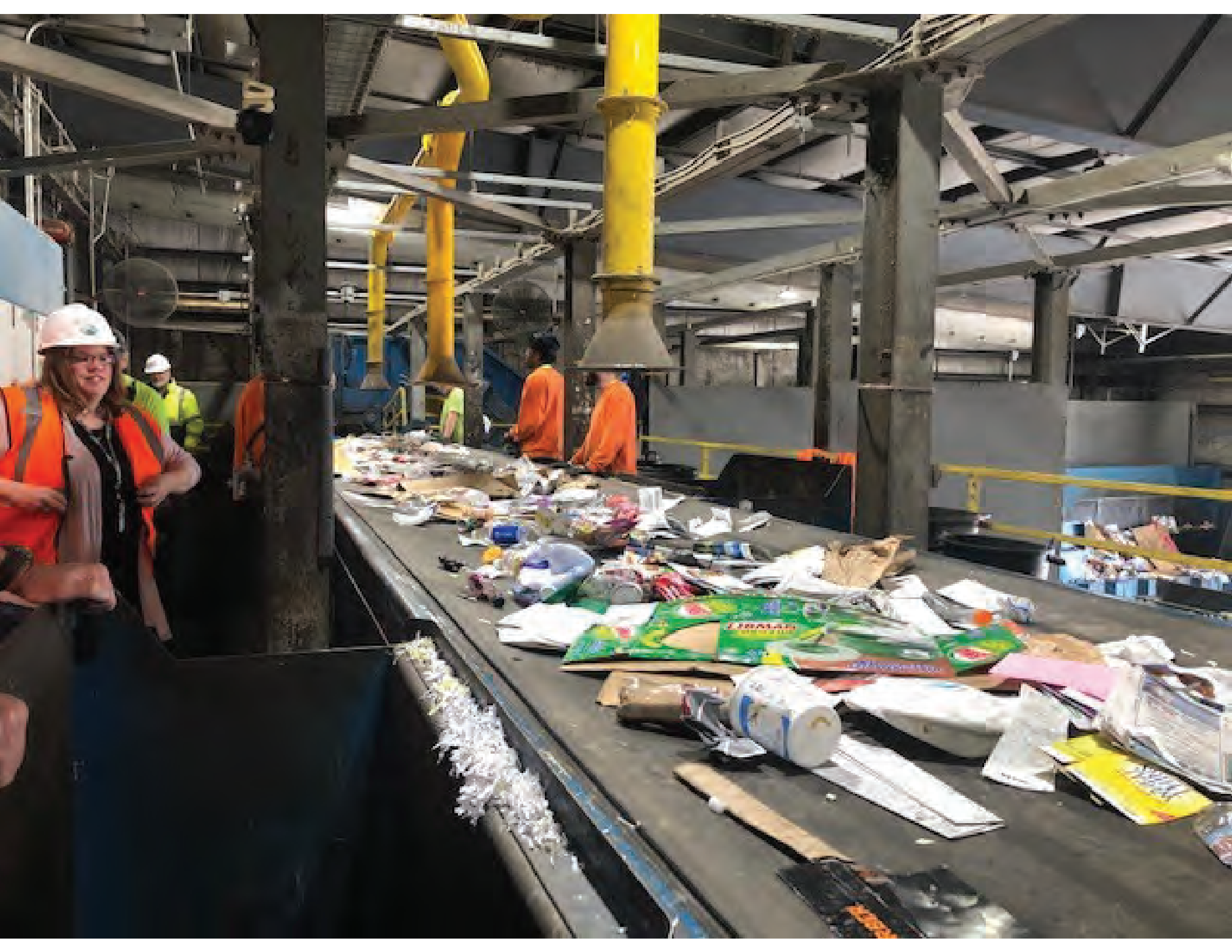
**PLEASE STAY IN YOUR VEHICLE AT ALL TIMES**



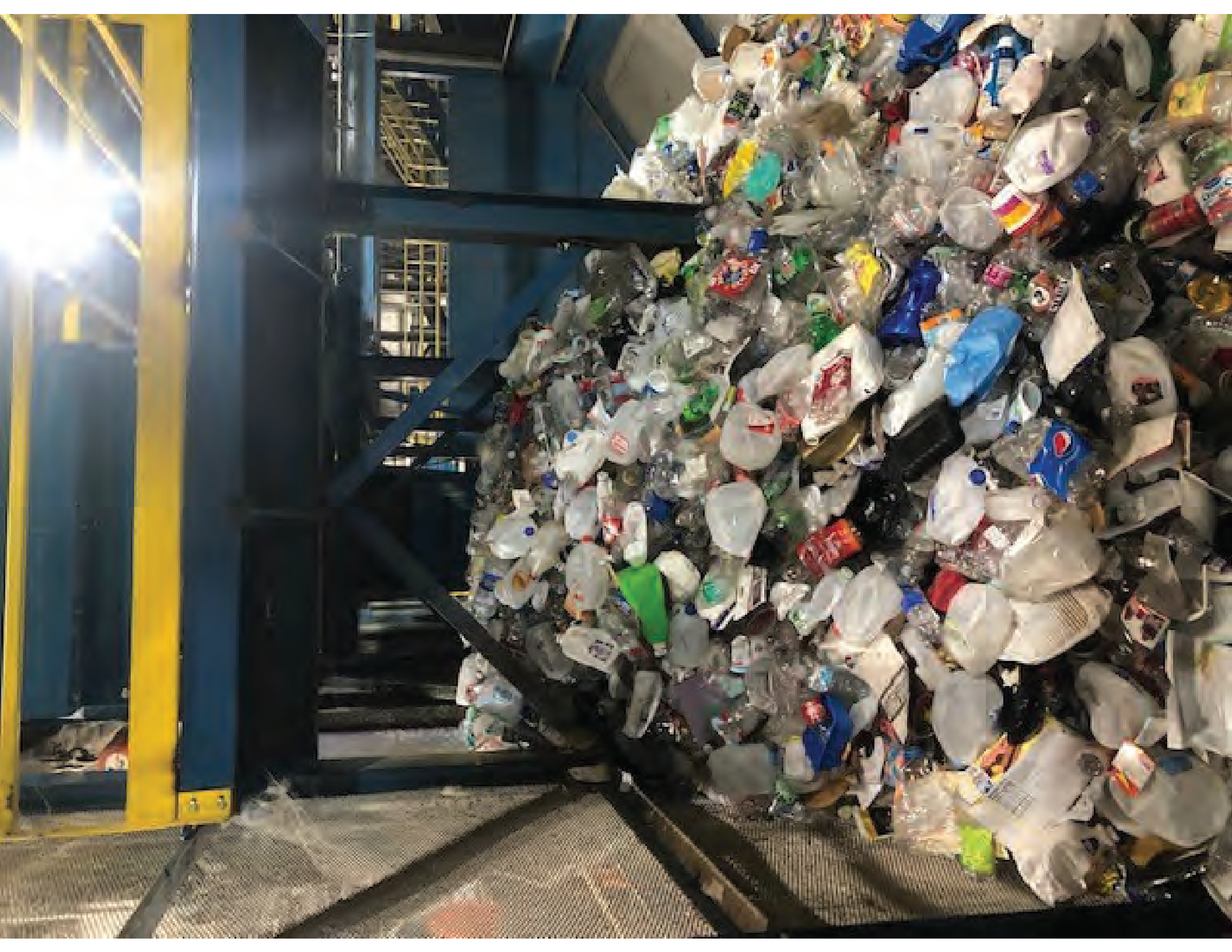












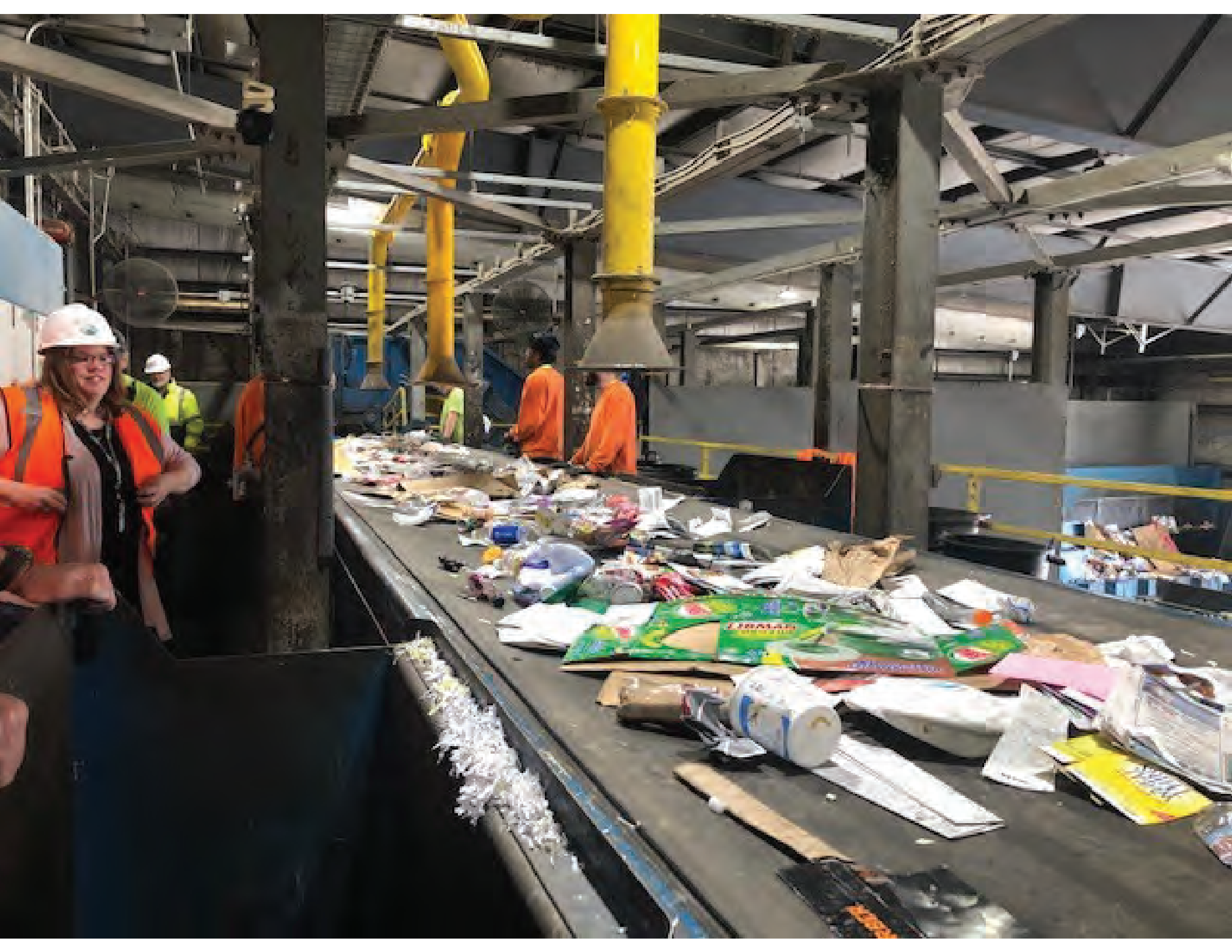
























1. No construction activity shall be permitted within the 100-foot buffer zone of the existing or proposed water body.

2. All construction activity shall be limited to the 100-foot buffer zone of the existing or proposed water body.

3. All construction activity shall be limited to the 100-foot buffer zone of the existing or proposed water body.

4. All construction activity shall be limited to the 100-foot buffer zone of the existing or proposed water body.

5. All construction activity shall be limited to the 100-foot buffer zone of the existing or proposed water body.

6. All construction activity shall be limited to the 100-foot buffer zone of the existing or proposed water body.

7. All construction activity shall be limited to the 100-foot buffer zone of the existing or proposed water body.

8. All construction activity shall be limited to the 100-foot buffer zone of the existing or proposed water body.

9. All construction activity shall be limited to the 100-foot buffer zone of the existing or proposed water body.

10. All construction activity shall be limited to the 100-foot buffer zone of the existing or proposed water body.





LEACHATE #1





NORTH ENTRANCE

**LCRMS**  
LANDFILL RECYCLE  
ENERGY

Operating Hours  
Monday - Friday  
8:00 AM - 4:00 PM  
Saturday - Sunday  
8:00 AM - 12:00 PM  
1516 East 107th  
Des Moines, IA 50319  
515.281.1011  
1516 East 107th  
Des Moines, IA 50319



NORTH ENTRANCE



Lycoming County  
Resource Management  
Services

447 Alexander Drive  
Montgomery, PA 17752

Monday-Friday 7:00am-4:30pm  
Saturday 7:00am-12:00pm

570-547-1870  
800-326-9571

PA DEP Permit  
No. 100963





GREEN EYE  
OPTICAL SORTERS  
BY HANSON DESIGN/CONCRETE

KEEP HANDS OUT OF  
MOVING MACHINERY



400 VOLTS

















STOP  
on RED  
Proceed  
with Caution  
on GREEN

29  
←

20

3  
←

31  
→

31  
←

32  
→

















40V LITHIUM  
5Ah









**This small pack of lithium batteries caused a bale fire at the LCRMS recycling facility yesterday. Luckily our crew responded quickly before it destroyed the entire building.**

**Keep batteries out of recycling!**

























**HOW LONG WOULD IT TAKE FOR THESE RECYCLABLES TO DECOMPOSE?**

**WHAT COULD THESE RECYCLABLES BECOME IF RECYCLED?**

**PLASTIC BAGS**

Reduce Use Reusable Bags  
Reuse Reuse Plastic Bags  
Recycle Recycle Plastic Bags

**LRMS**  
LANDFILL-ENERGY-RECYCLE

Reduce Use Reusable Bags  
Reuse Reuse Plastic Bags  
Recycle Recycle Plastic Bags

Recycling Facts

Recycling Facts

**LYCOMING CREEK**  
Lycoming Creek and Loyalock Creek Watershed

**CWI**





Please Place  
ONLY These Devices  
In This Container

TELEVISIONS

COMPUTERS

COMPUTER  
ACCESSORIES:

KEYBOARD  
MOUSE  
PRINTER  
SCANNER







STEEL/TIN CANS  
ALUMINUM CANS  
PLASTIC BOTTLES  
(9L & 2L ONLY)

VT BOTTLE

RECYCLING

RECYCLING

RECYCLING

RECYCLING

RECYCLING







PLASTIC BOTTLES

ALUMINUM CANS



RECYCLE

CLEAR STREAM





RECYCLING CENTER  
City of Williamsport - 1740 West Third Street





































# SNYDER COUNTY 2021 Recycling Event

## APPLIANCES \* METALS \* ELECTRONICS CLOTHING

### West Snyder Elementary School

*645 Snyder Ave., Beaver Springs*

SATURDAY, September 25 - 9 am to 3 pm

Sponsored by the following area companies:

Conestoga Wood Specialties

Burger King

Geisinger

Bingaman & Son Lumber

There will be a charge for the following electronic devices:

CRT monitors - \$17, LCD monitors - \$12

TVs under 42" - \$38, TVs over 42" - \$55

Floor copiers—\$20, Stereo consoles—\$35

There will be a \$10 charge for refrigerators, \$5 for AC units and dehumidifiers  
\$8 for large appliances such as washers/dryers, \$5 for small appliances

#### **ELECTRONICS**

- Computers
- Monitors
- Printers
- Copiers
- Keyboards
- Scanners
- Modems and routers
- Servers
- Cables
- Phones
- Televisions (all sizes)
- DVD & VCR players
- Stereos
- Radios

#### **APPLIANCES &**

##### **METALS**

- Air conditioners
- Dehumidifiers
- Freezers
- Refrigerators
- Stoves, microwaves
- Washers & dryers
- Water heaters
- Dishwashers
- Gas grills
- Gas grill tanks  
(valve removed)
- Small propane cylinders
- Lawn mowers

#### **CLOTHING &**

##### **TEXTILES**

- Clothing
- Blankets
- Curtains
- Purses
- Shoes
- Towels
- Clean dry rags
- Must be in good condition

#### **OTHERS**

Handicap Equipment

- WE CANNOT ACCEPT:**
- VCR tapes, CD & DVD disks
- Large wooden speakers
- Styrofoam
- Coffee makers
- Wooden crutches
- Vacuums
- Humidifiers

**We will accept donations to cover miscellaneous expenses**

This event is sponsored by the Snyder County Solid Waste Management Authority.  
Questions can be directed to [scswma@snydercounty.org](mailto:scswma@snydercounty.org) or 570-374-6889.





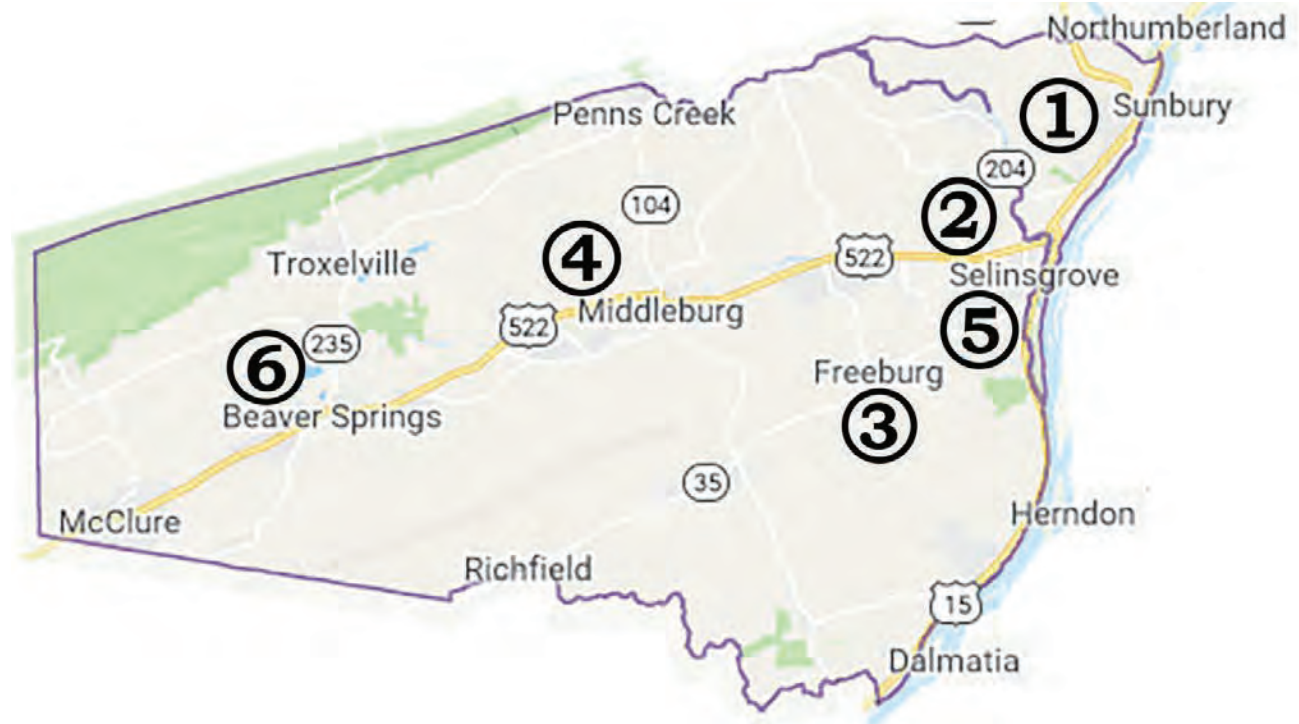
# SNYDER COUNTY

SOLID WASTE MANAGEMENT AUTHORITY



## Recycling Drop-Offs Open to County Residents

- ① **Monroe Township**  
Township Shed on Park Rd.  
Monday-Friday 7am-3pm  
3<sup>rd</sup> Saturday, 8am-1pm
- ② **Penn Township**  
Penn Twp. Building, 228 Clifford Rd.  
Monday-Friday and first Saturday 7am-2pm. Must be a resident.
- ③ **Freeburg**  
Front St., between Colonial Furniture and sewer plant  
Dawn to dusk 7 days a week
- ④ **Franklin Township**  
Municipal shed, 384 Greenhouse Rd.  
Dawn to dusk 6 days a week  
Closed Sunday
- ⑤ **Selinsgrove Boro**  
Boro shed, Sassafras St.  
Every Thursday, 8am-3pm  
1<sup>st</sup> and 3<sup>rd</sup> Saturday, 8am-12 noon
- ⑥ **Spring Township**  
14828 Stage Rd.  
Every Wednesday, 9am-7pm



Materials accepted: newspaper, magazines, corrugated cardboard, office paper, paper board, junk mail, aluminum cans, bimetal cans, clear glass, brown glass, green glass, #1 and #2 plastics, #3-7 plastics (Selinsgrove only)

For more information on what and how to recycle, call the Snyder County Solid Waste Management Authority at 570-374-6889, x-115 or visit the county website at [www.snydercounty.org](http://www.snydercounty.org)



# UNION COUNTY RECYCLING

## DROP OFF LOCATION:

- **Lewisburg Borough**  
Wolfe Field, St. Anthony's St.  
Wed. 8:00 - 4:00  
& Sat. 8:00 - 12:00
- **East Buffalo Twp.**  
Twp. Bldg., Fairground Rd.  
Wed. 7:00 - 3:30  
& 2nd Sat. 8:00 - 12:00
- **White Deer Twp.**  
Twp. Bldg., 2191 Creek Rd.  
1st & 3rd Sat. 8:00 - 11:00
- **Union Twp.**  
70 Municipal Lane, Winfield  
1st & 3rd Sat. 8:00 - 12:00
- **Mifflinburg Borough**  
Industrial Park Rd.  
1st & 3rd Sat. 8:00 - 11:00
- **New Berlin Borough**  
Borough Shed, Water St.  
Sat. 8:00 - 12:00
- **Kelly Twp.**  
551 Zeigler Rd, Lewisburg  
2nd & 4th Sat. 8:00 - 12:00
- **West End Recycling**  
Transfer Station, 1000 Poly Pine Rd.  
Sat. 9:00 - 3:00

### Acceptable Drop Off Materials:

- Clear, Brown & Green Glass
- Steel & Aluminum Cans
- Newspaper
- Magazines
- Corrugated Cardboard
- Plastic Bottles #1 & #2
- Phone Books
- Office Paper is also accepted at East Buffalo Twp.  
Lewisburg, Mifflinburg, Union Twp., and Kelly Twp.



### Curbside Pickup

Lewisburg	East Buffalo Twp.
<p>Accepted Items:</p> <ul style="list-style-type: none"> <li>• Aluminum cans</li> <li>• Glass containers</li> <li>• Newspaper</li> </ul> <p>Place items at curb by 8:00 am on the 1st Sat. of each month.</p>	<p>Accepted Items:</p> <ul style="list-style-type: none"> <li>• Aluminum cans</li> <li>• Glass containers</li> </ul> <p>Place items at curb by 7:00 am on the 1st Tues. of each month.</p>

For more information go to [www.unioncountypa.org](http://www.unioncountypa.org)





# pennsylvania

DEPARTMENT OF ENVIRONMENTAL PROTECTION

## The Covered Device Recycling Act (Act 108) of 2010 (CDRA) Responsibilities Landfill/Resource Recovery Facility, Hauler and Transfer Station

The Covered Device Recycling Act (CDRA) requires certain recycling responsibilities and a disposal ban for covered devices, both of which will affect landfills and resource recovery facilities, as well as haulers and transfer stations.

- ▶ Covered Devices include desktop computers, laptop computers, computer monitors, computer peripherals and televisions.
- ▶ Beginning Jan. 1, 2012, any covered device from a collection program in Pennsylvania must be recycled at a facility that has achieved and maintained either Responsible Recycling (R2) Practices Standard or e-Stewards certification, or certification from an internationally accredited third-party environmental management standard for the safe and responsible handling of covered devices (certified facility). (As is currently required, all Pennsylvania electronics recycling facilities must be approved to operate under general permit #WM/GR081 [regarding the processing and beneficial use of electronic equipment and components by sorting, disassembling or mechanical processing].)
- ▶ Beginning Jan. 24, 2013, no person may dispose of a covered device or any of its components with their municipal solid waste. Non-hazardous residuals of covered devices that are produced during the recycling of those devices by solid waste disposal facilities are excluded from the disposal ban.
- ▶ The disposal ban on covered devices also applies to truckload or container load quantities of covered devices from out-of-state sources.

### Additional Information Specific to Landfills and Resource Recovery Facilities

Landfills and resource recovery facilities may not accept covered devices or their components beginning Jan. 24, 2013. An owner or operator will not be found in violation of the CDRA if they:

- Have made a good faith effort to comply with the Act;
- Have posted, in a conspicuous location at the facility, a sign stating that covered devices or any of their components shall not be accepted at the facility; and
- Have notified, in writing, all collectors registered to deposit solid waste to the facility that covered devices or their components will not be accepted at the facility.

### Additional Information Specific to Haulers

Haulers of strictly covered devices do not need to obtain a waste transportation authorization from the Department of Environmental Protection (DEP).

Beginning Jan. 24, 2013, licensed waste haulers may not accept covered devices for disposal from any waste source or commingle covered devices with waste destined for disposal/resource recovery.

### Transfer Station Responsibilities

Beginning Jan. 24, 2013, permitted transfer stations may not commingle any covered devices with municipal or residual waste.

For more information on the CDRA, visit [www.depweb.state.pa.us](http://www.depweb.state.pa.us) (select 'Electronics Recycling' from the 'DEP Programs A - Z' menu), contact the **Recycling Hotline** at 1-800-346-4242 or contact:

Pennsylvania Department of Environmental Protection  
Bureau of Waste Management  
Division of Waste Minimization and Planning  
Rachel Carson State Office Building  
P. O. Box 8472  
Harrisburg, PA 17105-8472  
Telephone: 717-787-7382

For more information, visit [www.depweb.state.pa.us](http://www.depweb.state.pa.us), keyword: Electronics Recycling.